

**TOWN OF PLYMOUTH
PLYMOUTH MUNICIPAL AIRPORT**

**RELOCATE, RECONSTRUCT, MARK, LIGHT, AND SIGN TAXIWAY S (3,350LF X 35 FT);
RECONSTRUCT, MARK, LIGHT, AND SIGN STUB TAXIWAYS (240 LF X 35 FT EA.);**

AIP No. 3-25-0042-50

ADDENDUM No. 1

Date: February 28, 2020

The following is provided to clarify, add or delete information in the Contract Documents, Specifications and Plans for the above project. This information is required for bidding and construction, and the Bidder's acknowledgement of receipt of this Addendum is required on page B-1 of the BID PROPOSAL.

As a point of clarification, it should be understood that the Contract Documents govern all aspects of the project. Informal discussions held during the Pre-Bid Conference or over the telephone are informational only. All official changes to the Contract Documents are made only by addenda. The following changes and additional information are hereby made a part of the Contract Documents.

SPECIFICATIONS

1. Bid Form:

Replace the existing bid forms with the attached bid forms. Additional Quantities for Bid Items include:

P-501-5.1 Cement Concrete Sidewalk 160 SY

Revised Quantities include:

Item D-701-5.2 15inch HDPE : Revised Quantity is **60 LF**.

2. Technical Specifications:

Add the Technical Specifications Item P-501 Cement Concrete Sidewalk

DRAWINGS

1. Drawing G1.3 Quantities sheet has been revised to reflect the new quantities for P-501-5.1 and D-701-5.2
2. Drawing No. C3.6 has been revised to clarify the limits of the proposed architectural fence vs. chain link fence.
3. Drawing No. C4.2 has been revised to clarify the sidewalk related details.

**PLYMOUTH MUNICIPAL AIRPORT
RELOCATE TAXIWAY 'S'
ADDENDUM No. 1**

CLARIFICATIONS

Q: Please clarify where Item No. P-152-4.1 “Unclassified Excavation” is to be placed.

A: As stated in the specifications Section P-152, “Unclassified excavation shall consist of topsoil stripping and the excavation and disposal of all material, and hauling off-site regardless of its nature which is not otherwise classified and paid for under one of the following items. There is no on-airport storage available for this item”

Q: Please clarify where Item No. P-152-4.2 “Excavation to Embankment” is to be placed.

A: P-152-4.2 is to be placed on site for the formation of embankments on site for the taxiways, and at the location near Gate 4 shown on S1.1. Excess material shall be stockpiled near the contractor parking and staging area depicted on sheet S1.1.

Q: Where is the bid item for the paved concrete walkway?

A: The bid item for the concrete walkway is P-501. It has been added in this addendum.

Q: What are the limits of the proposed architectural fence?

The start and stop limits have been clarified on Drawing C3.6

Q: Item Number L-125-5.1, please confirm the requirement is 30W Quartz Taxiway Edge Lights?

A: L-125-5.1 is 30W Quartz Taxiway Edge Lights

Q: Item Number L-125-5.5 and L-125-5.6, please confirm the requirement is a New LED Size 2 Sign and not Incandescent 48 Watt Sign without Lamps Indicator. See Note 1 on Drawing on Drawing No. L2.2

A: Requirement is LED Size 2 Sign, not Incandescent.

Q: What DBE paperwork needs to be submitted with the bid? Is it just IB-7 and RC-4 submitted with the bid to acknowledge the goal then the letter of intent/schedule of participation can be submitted within 5\ days after the bid for the low bidder?

A: That is Correct. IB-7 and RC-4 is submitted with the bid. Letter of Intent/Schedule of Participation can be submitted within 5 days after the bid for the low bidder.

Q: Specification item P-154 Subbase course calls out recycled asphalt pavement. Typical sections C2.1 calls out recycled asphalt pavement as P-209A to be installed over the P-154 . Which is correct?

**PLYMOUTH MUNICIPAL AIRPORT
RELOCATE TAXIWAY 'S'
ADDENDUM No. 1**

A: The FAA specifications for P-154 Subbase Course allow for the use multiple materials, including the use of Recycled Asphalt Pavement as P-154. The taxiway 'S' project has been designed anticipating the use of recycled / reclaimed asphalt in the P-209A Cold Mixed Recycled Base Course, and a granular / bank run gravel material for P-154.

Q: P-152-4.2 Excavation to embankment is shown to stockpile 3,500 cy by gate 5 . Does the additional earth go offsite or to be stored onsite?

A: The quantity for excavation to embankment is material that will be placed on airport property. The quantity for unclassified excavation is the material that shall be hauled off-site.

PLYMOUTH MUNICIPAL AIRPORT RELOCATE TAXIWAY S - ADDENDUM 1 REVISION
AIP NO. 3-25-0042-50

Bidder agrees to perform all of the work described in Specifications, shown on the drawings and tabulated below for the following unit and lump sum prices.
 The quantities are estimated and are provided for the purposes of comparison only.

ITEM NUMBER	DESCRIPTION	ESTIMATED QUANTITY	UNIT	PRICE PER UNIT WRITTEN IN WORDS	TOTAL ITEM PRICE WRITTEN IN WORDS
P-101-4.1	Pavement Removal	12,940	SY	_____ _____ (\$ _____)	_____ _____ (\$ _____)
P-150-4.1	Pavement Marking Removal	6,210	SF	_____ _____ (\$ _____)	_____ _____ (\$ _____)
P-150-4.2	Chain - Link Fence Removal	940	LF	_____ _____ (\$ _____)	_____ _____ (\$ _____)
P-150-4.3	Electrical Duct Removal	165	EA	_____ _____ (\$ _____)	_____ _____ (\$ _____)
P-150-4.4	Taxiway Edge Light Removal	170	EA	_____ _____ (\$ _____)	_____ _____ (\$ _____)
P-150-4.5	Guide Sign and Foundation Removal	15	EA	_____ _____ (\$ _____)	_____ _____ (\$ _____)
P-150-4.6	Catch Basin Removal	1	EA	_____ _____ (\$ _____)	_____ _____ (\$ _____)
P-150-4.7	Stormwater Pipe Removal	90	LF	_____ _____ (\$ _____)	_____ _____ (\$ _____)
P-152-4.1	Unclassified Excavation	9,180	CY	_____ _____ (\$ _____)	_____ _____ (\$ _____)

**PLYMOUTH MUNICIPAL AIRPORT RELOCATE TAXIWAY S - ADDENDUM 1 REVISION
AIP NO. 3-25-0042-50**

ITEM NUMBER	DESCRIPTION	ESTIMATED QUANTITY	UNIT	PRICE PER UNIT WRITTEN IN WORDS	TOTAL ITEM PRICE WRITTEN IN WORDS
P-152-4.2	Excavation to Embankment	26,820	CY	_____ _____ (\$ _____)	_____ _____ (\$ _____)
P-154-5.1	Subbase Course	12,600	CY	_____ _____ (\$ _____)	_____ _____ (\$ _____)
C-102-5.1	Silt Fence	7,640	LF	_____ _____ (\$ _____)	_____ _____ (\$ _____)
C-102-5.2	Erosion Control Matting	4,700	SY	_____ _____ (\$ _____)	_____ _____ (\$ _____)
C-102-5.3	Straw Wattle	360	LF	_____ _____ (\$ _____)	_____ _____ (\$ _____)
C-102-5.4	Catch Basin Inlet Protection	27	EA.	_____ _____ (\$ _____)	_____ _____ (\$ _____)
C-102-5.5	Temporary Seed	1	Acre	_____ _____ (\$ _____)	_____ _____ (\$ _____)
C-102-5.6	Stabilized Construction Entrance	1	LS	_____ _____ (\$ _____)	_____ _____ (\$ _____)

PLYMOUTH MUNICIPAL AIRPORT RELOCATE TAXIWAY S - ADDENDUM 1 REVISION

AIP NO. 3-25-0042-50

NUMBER	DESCRIPTION	QUANTITY	UNIT	WRITTEN IN WORDS	WRITTEN IN WORDS
P-209-5.1	Crushed Aggregate Base Course	550	CY	_____ _____ (\$ _____)	_____ _____ (\$ _____)
P-209A-5.1	Cold-Mixed Recycled Base Course	4,650	CY	_____ _____ (\$ _____)	_____ _____ (\$ _____)
P-209A-5.2	Supplemental Aggregate	1,170	CY	_____ _____ (\$ _____)	_____ _____ (\$ _____)
P-401-8.1	Bituminous Pavement - Binder Course	4,340	TON	_____ _____ (\$ _____)	_____ _____ (\$ _____)
P-401-8.2	Bituminous Pavement - Wearing Course	4,310	TON	_____ _____ (\$ _____)	_____ _____ (\$ _____)
P-410-5.1	Sawcutting	1,560	LF	_____ _____ (\$ _____)	_____ _____ (\$ _____)
P-603-5.1	Emulsified Asphalt Tack Coat	1,800	GAL.	_____ _____ (\$ _____)	_____ _____ (\$ _____)
P-620-5.1	Yellow Paint	9,050	SF	_____ _____ (\$ _____)	_____ _____ (\$ _____)
P-620-5.2	Black Paint	16,040	SF	_____ _____ (\$ _____)	_____ _____ (\$ _____)

PLYMOUTH MUNICIPAL AIRPORT RELOCATE TAXIWAY S - ADDENDUM 1 REVISION
AIP NO. 3-25-0042-50

ITEM NUMBER	DESCRIPTION	ESTIMATED QUANTITY	UNIT	PRICE PER UNIT WRITTEN IN WORDS	TOTAL ITEM PRICE WRITTEN IN WORDS
D-701-5.1	12-inch HDPE	105	LF	_____ _____ (\$ _____)	_____ _____ (\$ _____)
D-701-5.2	15-inch HDPE	60	LF	_____ _____ (\$ _____)	_____ _____ (\$ _____)
D-701-5.3	18-inch HDPE	70	LF	_____ _____ (\$ _____)	_____ _____ (\$ _____)
D-701-5.4	15-inch Reinforced Concrete Pipe	165	LF	_____ _____ (\$ _____)	_____ _____ (\$ _____)
D-751-5.1	Deep Sump Catch Basin, frame and grate	4	EA.	_____ _____ (\$ _____)	_____ _____ (\$ _____)
D-751-5.2	Drainage Manhole, frame and cover	2	EA.	_____ _____ (\$ _____)	_____ _____ (\$ _____)
D-751-5.3	Leaching Drainage Manhole, Frame and Cover	3	EA.	_____ _____ (\$ _____)	_____ _____ (\$ _____)
D-752-5.1	15-inch Flared End Section	2	EA.	_____ _____ (\$ _____)	_____ _____ (\$ _____)
D-752-5.2	18-inch Flared End Section	2	EA.	_____ _____ (\$ _____)	_____ _____ (\$ _____)

**PLYMOUTH MUNICIPAL AIRPORT RELOCATE TAXIWAY S - ADDENDUM 1 REVISION
AIP NO. 3-25-0042-50**

ITEM NUMBER	DESCRIPTION	ESTIMATED QUANTITY	UNIT	PRICE PER UNIT WRITTEN IN WORDS	TOTAL ITEM PRICE WRITTEN IN WORDS
D-752-5.3	24-inch Dry Well	2	EA.	_____ _____ (\$ _____)	_____ _____ (\$ _____)
T-901-5.1	General Seeding	8	AC.	_____ _____ (\$ _____)	_____ _____ (\$ _____)
T-905-5.1	Topsoiling	4,050	CY	_____ _____ (\$ _____)	_____ _____ (\$ _____)
T-908-5.1	Mulching	8	AC	_____ _____ (\$ _____)	_____ _____ (\$ _____)
L-108-5.1	Cable Trench	13,500	LF	_____ _____ (\$ _____)	_____ _____ (\$ _____)
L-108-5.2	No. 8 AWG, 5kV, Type C, 7 Strand, L-824 Cable, installed in trench, duct bank or conduit	14,690	LF	_____ _____ (\$ _____)	_____ _____ (\$ _____)
L-108-5.3	No. 6AWG, Soild, Bare Copper Counterpoise Wire, installed in trench, including Connections/Termination	14,690	LF	_____ _____ (\$ _____)	_____ _____ (\$ _____)
L-110-5.1	Extend Existing Electrical Duct	370	LF	_____ _____ (\$ _____)	_____ _____ (\$ _____)
L-110-5.2	4" 4-Way Concrete Encased Electrical Duct Bank	1,110	LF	_____ _____ (\$ _____)	_____ _____ (\$ _____)

**PLYMOUTH MUNICIPAL AIRPORT RELOCATE TAXIWAY S - ADDENDUM 1 REVISION
AIP NO. 3-25-0042-50**

ITEM NUMBER	DESCRIPTION	ESTIMATED QUANTITY	UNIT	PRICE PER UNIT WRITTEN IN WORDS	TOTAL ITEM PRICE WRITTEN IN WORDS
L-110-5.3	Concrete Duct or Splice Marker	95	EA.	_____ _____ (\$ _____)	_____ _____ (\$ _____)
L-115-5.1	Electrical Handhole	29	EA.	_____ _____ (\$ _____)	_____ _____ (\$ _____)
L-125-5.1	New Taxiway Edge Light -Quartz Lamp, Stake Mounted	169	EA.	_____ _____ (\$ _____)	_____ _____ (\$ _____)
L-125-5.2	New Taxiway Edge Light -Quartz Lamp, Base Mounted	38	EA.	_____ _____ (\$ _____)	_____ _____ (\$ _____)
L-125-5.3	Remove and Reset Taxiway Edge Light - LED Lamp, Stake Mounted	13	EA.	_____ _____ (\$ _____)	_____ _____ (\$ _____)
L-125-5.4	Remove and Reset Taxiway Edge Light - LED Lamp, Base Mounted	2	EA.	_____ _____ (\$ _____)	_____ _____ (\$ _____)
L-125-5.5	Install New Guidance Sign	33	EA.	_____ _____ (\$ _____)	_____ _____ (\$ _____)
L-125-5.6	Replace Existing Guidance Sign on Existing Foundation	2	EA.	_____ _____ (\$ _____)	_____ _____ (\$ _____)

PLYMOUTH MUNICIPAL AIRPORT RELOCATE TAXIWAY S - ADDENDUM 1 REVISION
AIP NO. 3-25-0042-50

NUMBER	DESCRIPTION	QUANTITY	UNIT	WRITTEN IN WORDS	WRITTEN IN WORDS
L-125-5.7	Runway Closure Markers	4	EA.	_____ _____ (\$ _____)	_____ _____ (\$ _____)
F-160-5.1	4' High Architectural Fence	200	LF	_____ _____ (\$ _____)	_____ _____ (\$ _____)
F-160-5.2	4' High, 4' Wide Architectural Fence Pedestrian Gate	1	EA.	_____ _____ (\$ _____)	_____ _____ (\$ _____)
F-162-5.1	6' High Chain Link Fence	630	LF	_____ _____ (\$ _____)	_____ _____ (\$ _____)
F-162-5.2	6' High, 4' Wide Chain Link Fence Pedestrian Gate	1	EA.	_____ _____ (\$ _____)	_____ _____ (\$ _____)
F-162-5.3	8' High Cantilever Vehicle Gate	1	EA.	_____ _____ (\$ _____)	_____ _____ (\$ _____)
P-501	Cement Concrete Sidewalk	160	SY	_____ _____ (\$ _____)	_____ _____ (\$ _____)

_____ (\$ _____)

TOTAL BID:

ITEM P-501 CEMENT CONCRETE SIDEWALK

DESCRIPTION

501-1.1 This work shall consist of the construction of cement concrete sidewalks, with reinforcement, in accordance with the specifications and within the tolerances established on the plans.

MATERIALS

501-2.1 Materials shall meet the requirements specified in the following material specifications:

- a. Item P-209 Crushed Aggregate Base Course
- b. Item P-610 Concrete for Miscellaneous Structures

501-2.2 Premolded Expansion Joint Filler

Premolded joint filler for isolation joints shall conform to the requirements of ASTM D1751 or ASTM D1752 and shall be where shown on the plans. The filler for each joint shall be furnished in a single piece for the full depth and width required for the joint, unless otherwise specified by the RPR. When the use of more than one piece is required for a joint, the abutting ends shall be fastened securely and held accurately to shape by stapling or other positive fastening means satisfactory to the RPR.

CONSTRUCTION METHODS

501-3.1 Preparation of Underlying Surface

A. Excavation.

Excavation of the area shall be in accordance with Specification P-152 Excavation and Embankment.

B. Subgrade and Subbase.

The subgrade for the sidewalks shall be shaped parallel to the proposed surface of the sidewalks and driveways and thoroughly compacted. All depressions in the subgrade shall be filled with suitable material and again compacted until the surface is smooth and hard. Prior to the placement of the subbase, the Contractor shall inspect the prepared subgrade to ensure that it is in conformance with the required grade and cross-slope. Subgrade shall be fine graded to meet the applicable requirements of Specification P-152 Excavation and Embankment.

After the subgrade has been prepared, a gravel subbase shall be placed upon it. After being compacted thoroughly, the subbase shall be at least 6 inches thick and parallel to the proposed surface of the sidewalk. Prior to the placement of the cement concrete, the Contractor shall inspect the prepared subbase material to ensure that it is in conformance with the required grade and

cross-section. Subbase material that is not in accordance with the plans or specifications shall be reworked or replaced to meet the applicable requirements of Subsection 170: Grading before the start of cement concrete placement. When placing cement concrete, the compacted subbase shall not be frozen or have standing water.

501-3.2 Cement Concrete Sidewalks

A. Forms.

Side forms and transverse forms shall be smooth, free from warp, of sufficient strength to resist springing out of shape, of a depth to conform to the thickness of the proposed sidewalk.

All mortar or dirt shall be completely removed from forms that have been previously used. The forms shall be well staked and thoroughly graded and set to the established lines with their upper edge conforming to the grade of the finished sidewalk which shall have sufficient pitch to provide for surface drainage.

B. Placing and Finishing Cement Concrete.

The concrete shall be placed in alternate slabs 20 ft long except as otherwise ordered. The slabs shall be separated by transverse preformed expansion joint filler ½ in. thick. Preformed expansion joint filler shall be placed adjacent to or around existing structures as directed.

No finishing operation shall be performed while free water is present. Finishing operations shall be delayed until all bleed water and water sheen has left the surface and the concrete has started to stiffen. After water sheen has disappeared, edging operations, where required, shall be completed. After edging and joining operations, the surface shall be floated. Immediately following floating, the surface shall be steel-troweled. If necessary tooled joints and edges shall be rerun before and after troweling to maintain uniformity. After troweling, the surface shall be brushed by drawing a soft-bristled push broom with a long handle over the surface of the concrete to produce a nonslip surface.

In conveying the concrete from the place of mixing to the place of deposit, the operation shall be conducted in such a manner that no mortar will be lost, and the concrete shall be so handled that the concrete will be of uniform composition throughout, showing neither excess nor lack of mortar in any one place.

The surface of all concrete sidewalks shall be uniformly scored into block units of areas not more than 36 ft². The depth of the scoring shall be at least ½ in. deep and no more than ½ in. wide. The application of neat cement to surfaces in order to hasten hardening is prohibited.

The finishing of concrete surface shall be done by experienced and competent cement finishers.

When completed the sidewalks shall be kept moist and protected from traffic and weather for at least 3 days

METHOD OF MEASUREMENT

501-4.1 Cement Concrete Sidewalks will be measured in square yards

BASIS OF PAYMENT

501-5.1 Cement Concrete Sidewalk will be paid for at the contract unit price per square yard complete in place. This price shall be full compensation for furnishing all materials and for all preparation, excavation, backfilling and placing of the materials; existing pavement as may be required to complete the item as shown on the plans; and for all labor equipment, tools and incidentals necessary to complete the work.

Pay items and units:

P-501-5.1 Cement Concrete Sidewalk– Per Square Yard

END OF ITEM P-501

DO NOT REMOVE
THIS PAGE INTENTIONALLY LEFT BLANK

BID SET

ITEM	SPEC.	DESCRIPTION	UNIT	QUANTITY
NO.	SECTION			
1	P-101-4.1	Pavement Removal	SY	12,940
2	P-150-4.1	Pavement Marking Removal	SF	6,210
3	P-150-4.2	Chain-Link Fence Removal	LF	940
4	P-150-4.3	Electrical Duct Removal	LF	165
5	P-150-4.4	Taxiway Edge Light Removal	EA.	170
6	P-150-4.5	Guide Sign and Foundation Removal	EA.	15
7	P-150-4.6	Catch Basin Removal	EA.	1
8	P-150-4.7	Stormwater Pipe Removal	LF	90
9	P-152-4.1	Unclassified Excavation	CY	9,180
10	P-152-4.2	Excavation to Embankment	CY	26,820
11	P-154-5.1	Subbase Course	CY	12,600
12	C-102-5.1	Silt Fence	LF	7,640
13	C-102-5.2	Erosion Control Matting	SY	4,700
14	C-102-5.3	Straw Wattle	LF	360
15	C-102-5.4	Catch Basin Inlet Protection	EA.	27
16	C-102-5.5	Temporary Seed	AC.	1
17	C-102-5.6	Stabilized Construction Entrance	LS	1
18	P-209-5.1	Crushed Aggregate Base Course	CY	550
19	P-209A-5.1	Cold-Mixed Recycled Base Course	CY	4,650
20	P-209A-5.2	Supplemental Aggregate	CY	1,170
21	P-401-8.1	Bituminous Pavement - Binder Course	TON	4,340
22	P-401-8.2	Bituminous Pavement - Wearing Course	TON	4,310
23	P-410-5.1	Sawcutting	LF	1,560
24	P-603-5.1	Emulsified Asphalt Tack Coat	GAL.	1,800
25	P-620-5.1	Yellow Paint	SF	9,050
26	P-620-5.2	Black Paint	SF	16,040
27	D-701-5.1	12-inch HDPE	LF	105
28	D-701-5.2	15-inch HDPE	LF	60
29	D-701-5.3	18-inch HDPE	LF	70

ITEM	SPEC.	DESCRIPTION	UNIT	QUANTITY
NO.	SECTION			
30	D-701-5.4	15-inch Reinforced Concrete Pipe	LF	165
31	D-751-5.1	Deep Sump Catch Basin, Frame and Grate	EA.	4
32	D-751-5.2	Drainage Manhole, Frame and Cover	EA.	2
33	D-751-5.3	Leaching Drainage Manhole, Frame and Cover	EA.	3
34	D-752-5.1	15-inch Flared End Section	EA.	2
35	D-752-5.2	18-inch Flared End Section	EA.	2
36	D-752-5.3	24-inch Dry Well	EA.	2
37	T-901-5.1	General Seeding	AC.	8
38	T-905-5.1	Topsiiling	CY	4,050
39	T-908-5.1	Mulching	AC.	8
40	L-108-5.1	Cable Trench	LF	13,500
41	L-108-5.2	No. 8 AWG, 5 kv, Type C, 7 Strand, L-824 Cable, Installed in Trench, Duct Bank or Conduit	LF	14,690
42	L-108-5.3	No. 6 AWG, Solid, Bare Copper Counterpoise Wire, Installed in Trench, Including Connections/Terminations	LF	14,690
43	L-110-5.1	Extend Existing Electrical Duct	LF	370
44	L-110-5.2	4" 4-Way Concrete Encased Electrical Duct Bank	LF	1,110
45	L-110-5.3	Concrete Duct or Splice Marker	EA.	95
46	L-115-5.1	Electrical Handhole	EA.	29
47	L-125-5.1	New Taxiway Edge Light – Quartz Lamp, Stake Mounted	EA.	169
48	L-125-5.2	New Taxiway Edge Light – Quartz Lamp, Base Mounted	EA.	38
49	L-125-5.3	Remove and Reset Taxiway Edge Light – LED Lamp, Stake Mounted	EA.	13
50	L-125-5.4	Remove and Reset Taxiway Edge Light – LED Lamp, Base Mounted	EA.	2
51	L-125-5.5	Install New Guidance Sign	EA.	33
52	L-125-5.6	Replace Existing Guidance Sign on Existing Foundation	EA.	2
53	L-125-5.7	Runway Closure Markers	EA.	4
54	F-160-5.1	4' High Architectural Fence	LF	200
55	F-160-5.2	4' High, 4' Wide Architectural Fence Pedestrian Gate	EA.	1
56	F-162-5.1	6' High Chain Link Fence	LF	630
57	F-162-5.2	6' High, 4' Wide Chain Link Fence Pedestrian Gate	EA.	1
58	F-162-5.3	8' High Cantilever Vehicle Gate	EA.	1
59	P-501	Cement Concrete Sidewalk	SY	160

1

NO.	DATE	DESCRIPTION
1	2/25/20	ADDENDUM 1

PLYMOUTH
MUNICIPAL AIRPORT
PLYMOUTH
MASSACHUSETTS

**RELOCATE,
RECONSTRUCT,
MARK, LIGHT
AND SIGN TAXIWAY S
(35FT X 3,350LF)**

**RECONSTRUCT, MARK,
LIGHT, AND SIGN
STUB TAXIWAYS
(240LF X 35 FT EA.)**

AIP NO. 3-25-0042-50

DRAWING DESCRIPTION

QUANTITIES

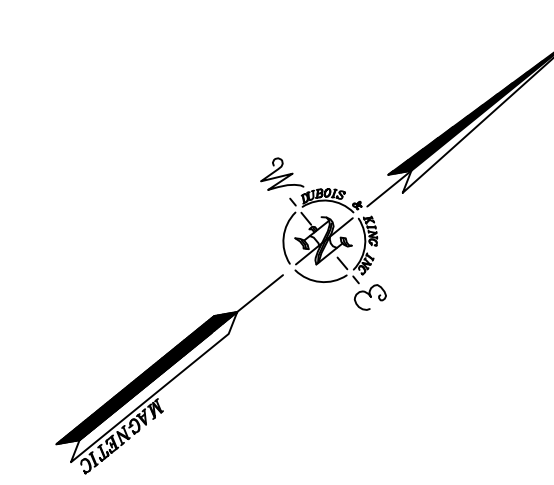
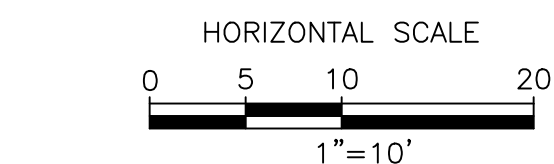
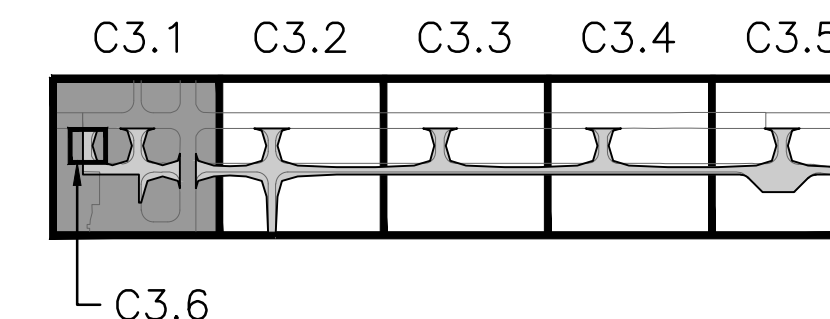
DRAWN BY EFM	DATE JANUARY 2020
CHECKED BY MCG	D&K PROJECT # 324798
PROJ. ENG. RLT	D&K ARCHIVE #

DRAWING NO.

G1.3

SHEET 03 OF 73

BID SET



NO.	DATE	DESCRIPTION	BY	CHK'D
1	2/25/20	APPENDUM 1		

PLYMOUTH MUNICIPAL AIRPORT
PLYMOUTH MASSACHUSETTS

RELOCATE, RECONSTRUCT, MARK, LIGHT AND SIGN TAXIWAY S (35FT X 3,350LF)
RECONSTRUCT, MARK, LIGHT, AND SIGN STUB TAXIWAYS (240LF X 35 FT EA.)

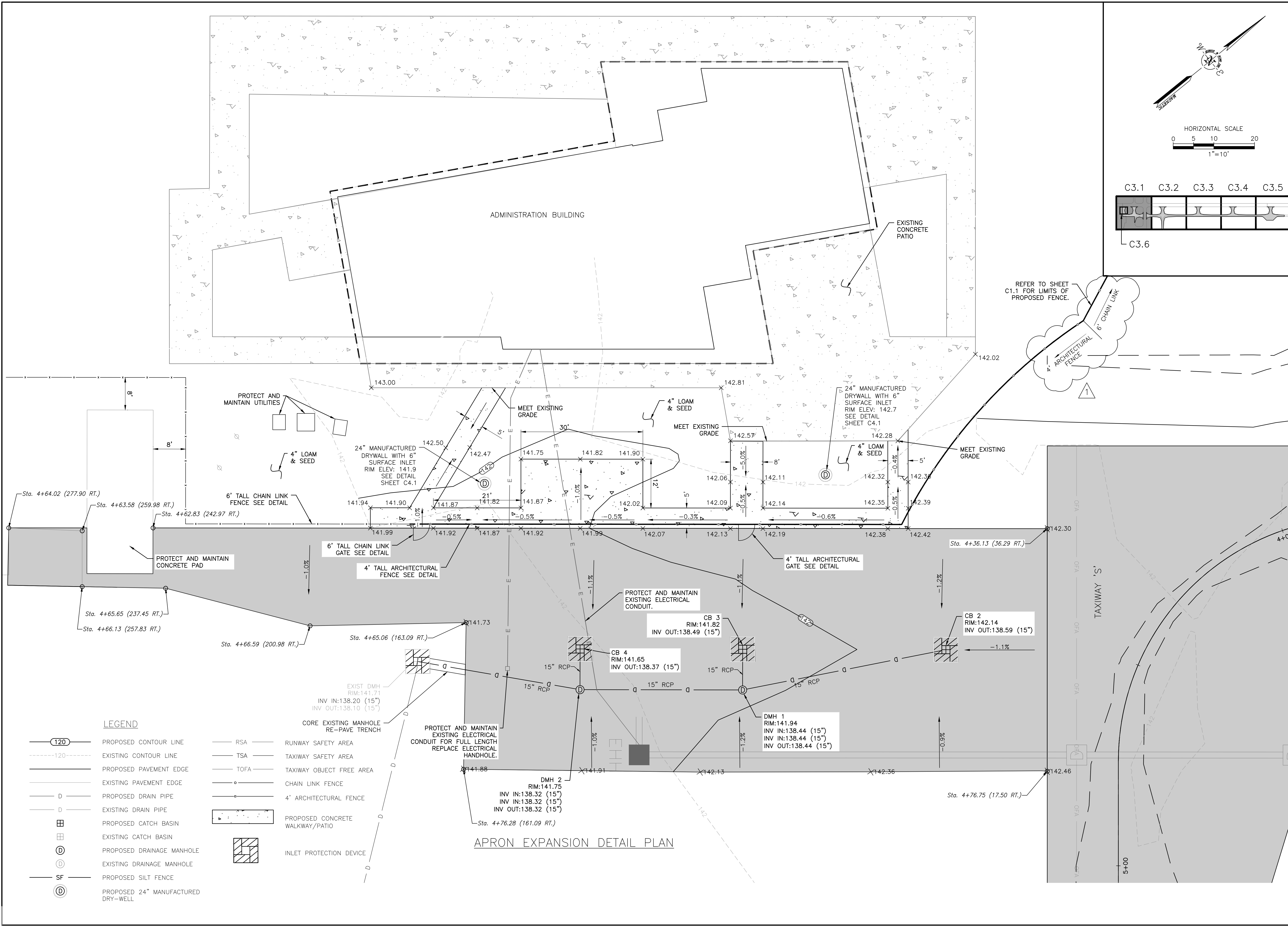
AIP NO. 3-25-0042-50
DRAWING DESCRIPTION

APRON EXPANSION GRADING PLAN

DRAWN BY	DATE
EFM	JANUARY 2020
CHECKED BY	D&K PROJECT #
MCG	324798
PROJ. ENG.	D&K ARCHIVE #
RLT	

DRAWING NO.

C3.6



LEGEND

- PROPOSED CONTOUR LINE
- EXISTING CONTOUR LINE
- PROPOSED PAVEMENT EDGE
- EXISTING PAVEMENT EDGE
- PROPOSED DRAIN PIPE
- EXISTING DRAIN PIPE
- PROPOSED CATCH BASIN
- EXISTING CATCH BASIN
- PROPOSED DRAINAGE MANHOLE
- EXISTING DRAINAGE MANHOLE
- PROPOSED SILT FENCE
- PROPOSED 24\"/>
- RUNWAY SAFETY AREA
- TAXIWAY SAFETY AREA
- TAXIWAY OBJECT FREE AREA
- CHAIN LINK FENCE
- 4\"/>
- PROPOSED CONCRETE WALKWAY/PATIO
- INLET PROTECTION DEVICE

APRON EXPANSION DETAIL PLAN

I:\1\24798 PAC Torrey S Retention Drawings - Addendum 1\35_C3.6_T11 S Grading & Drainage.dwg 2/25/2020 2:35 PM

BID SET

NO.	1	DATE	2/25/20
DESCRIPTION	ADDENDUM 1	BY	RLT
		CHK'D	MCC

PLYMOUTH MUNICIPAL AIRPORT PLYMOUTH MASSACHUSETTS

RELOCATE, RECONSTRUCT, MARK, LIGHT AND SIGN TAXIWAY S (35FT X 3,350LF)

RECONSTRUCT, MARK, LIGHT, AND SIGN STUB TAXIWAYS (240LF X 35 FT EA.)

AIP NO. 3-25-0042-50

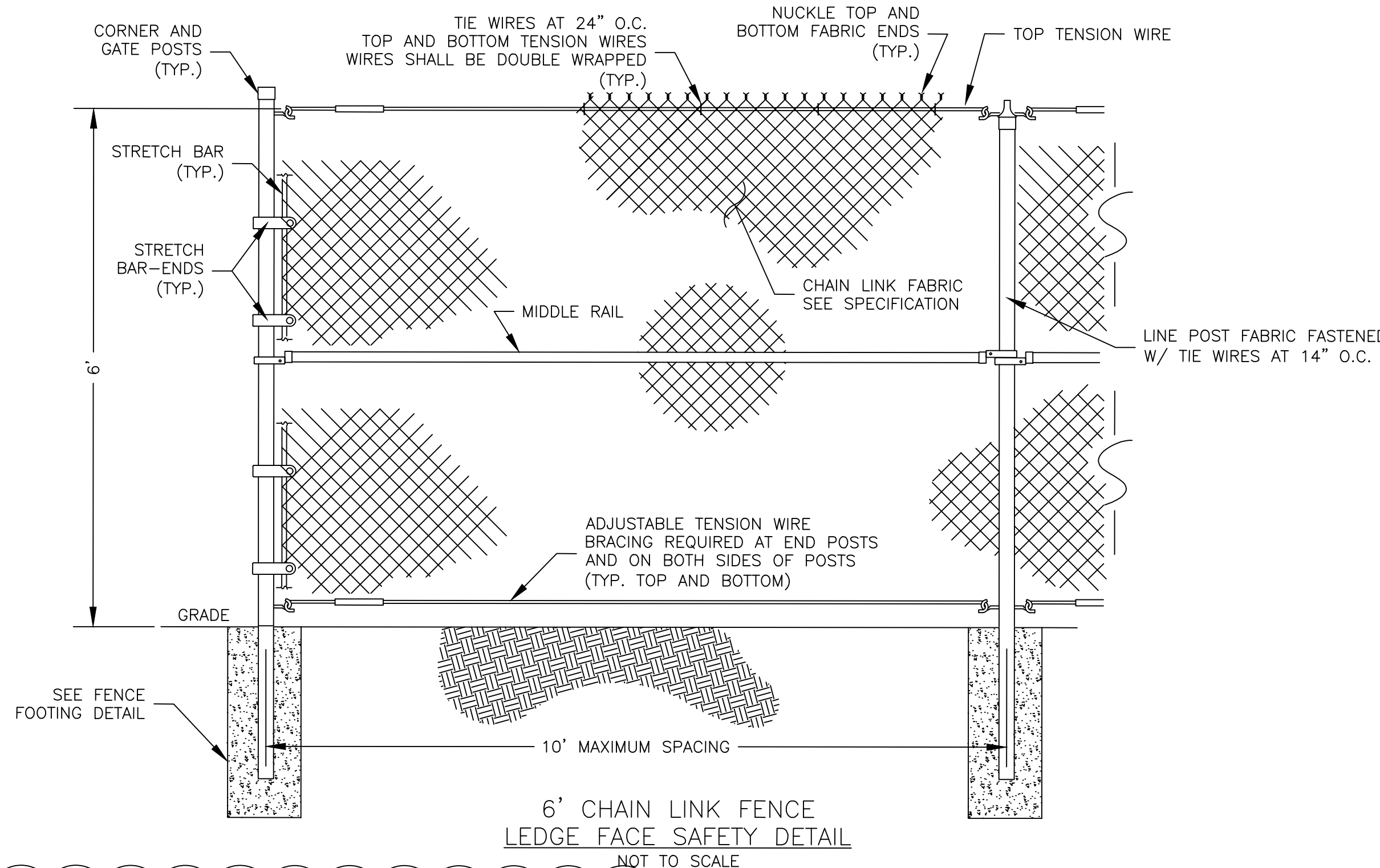
DRAWING DESCRIPTION

DETAILS 2 OF 3

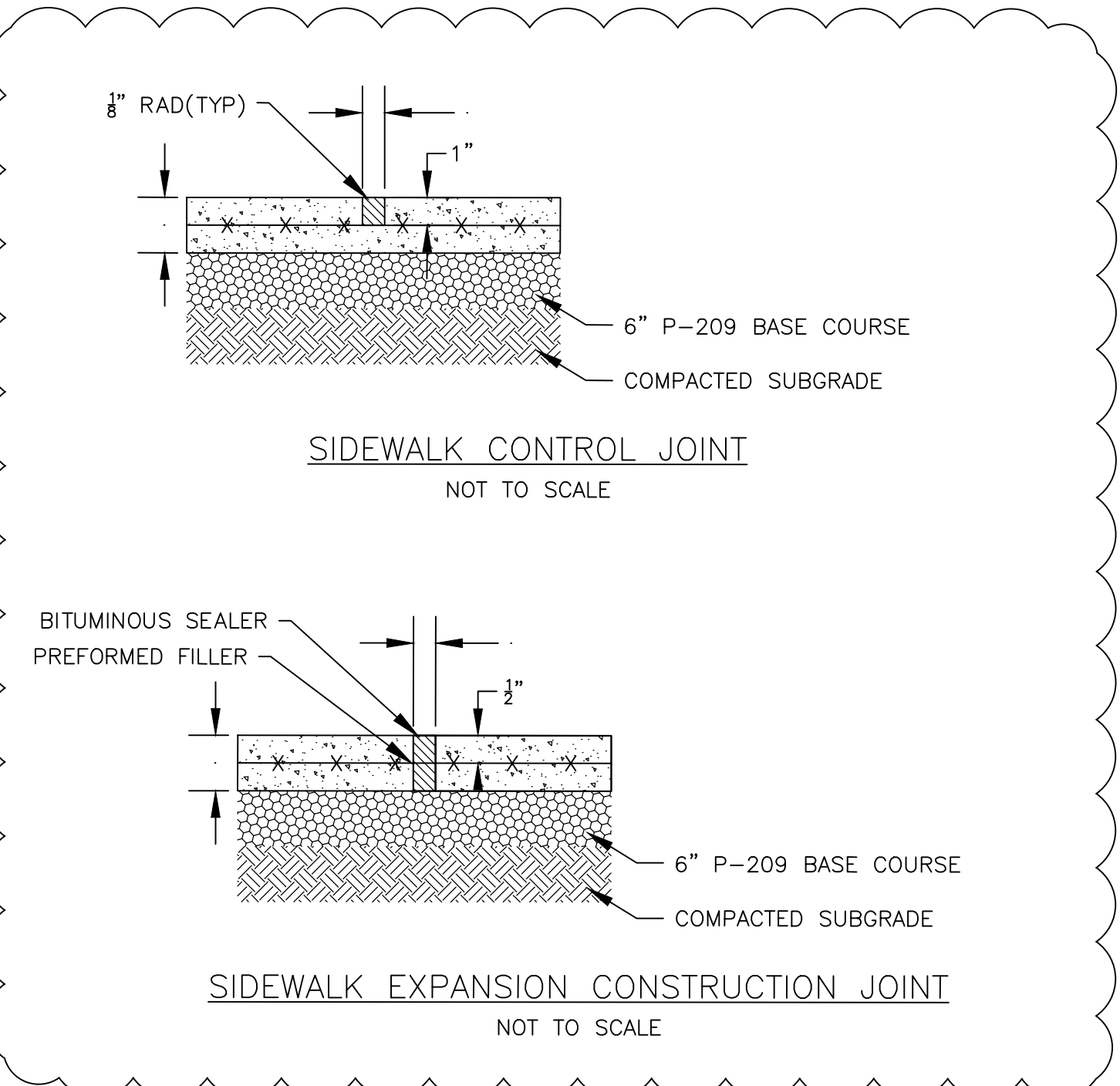
DRAWN BY	EFM	DATE	JANUARY 2020
CHECKED BY	MCG	D&K PROJECT #	324798
PROJ. ENG.	RLT	D&K ARCHIVE #	

DRAWING NO.

C4.2

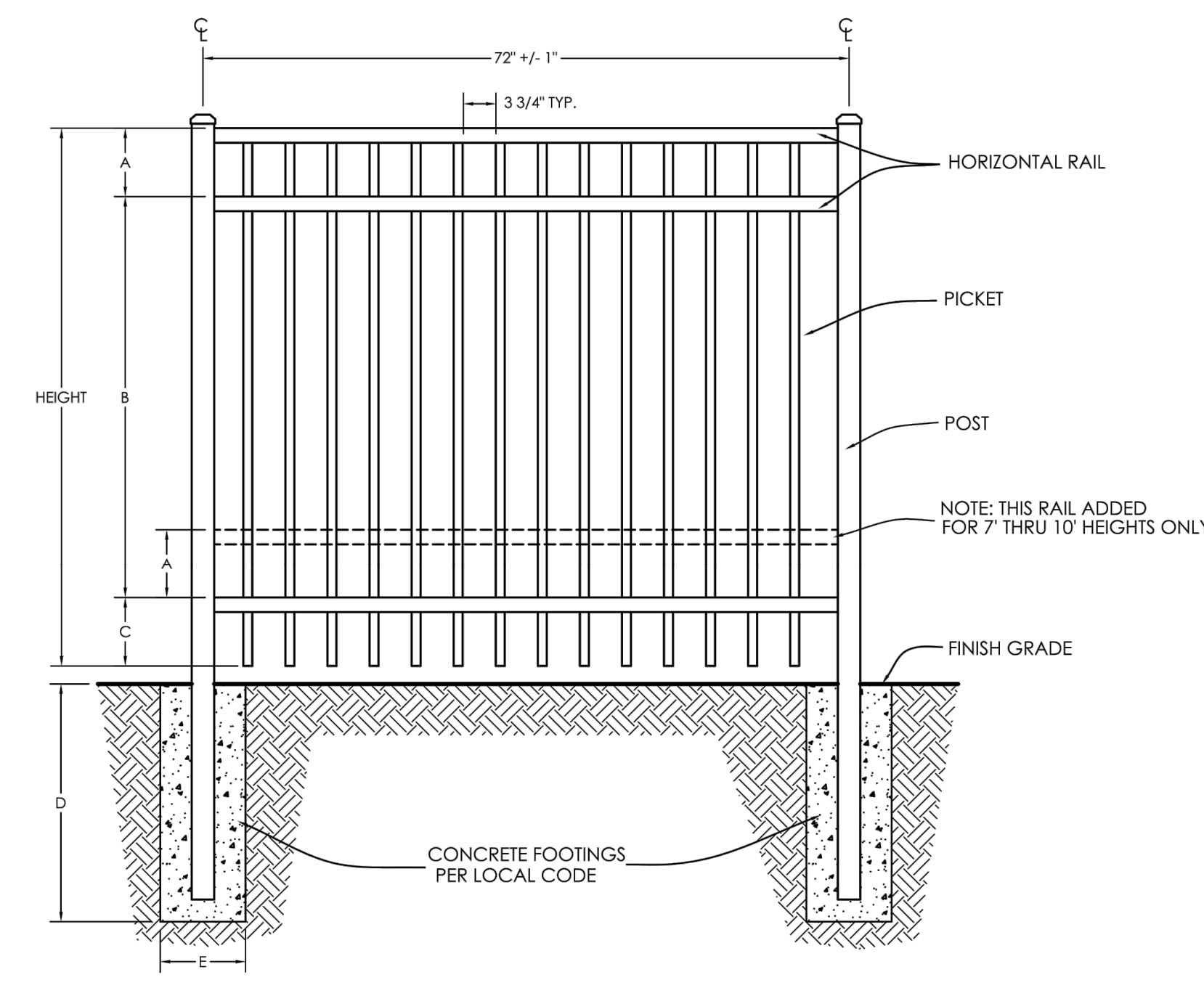


6' CHAIN LINK FENCE
LEDGE FACE SAFETY DETAIL
NOT TO SCALE



SIDEWALK CONTROL JOINT
NOT TO SCALE

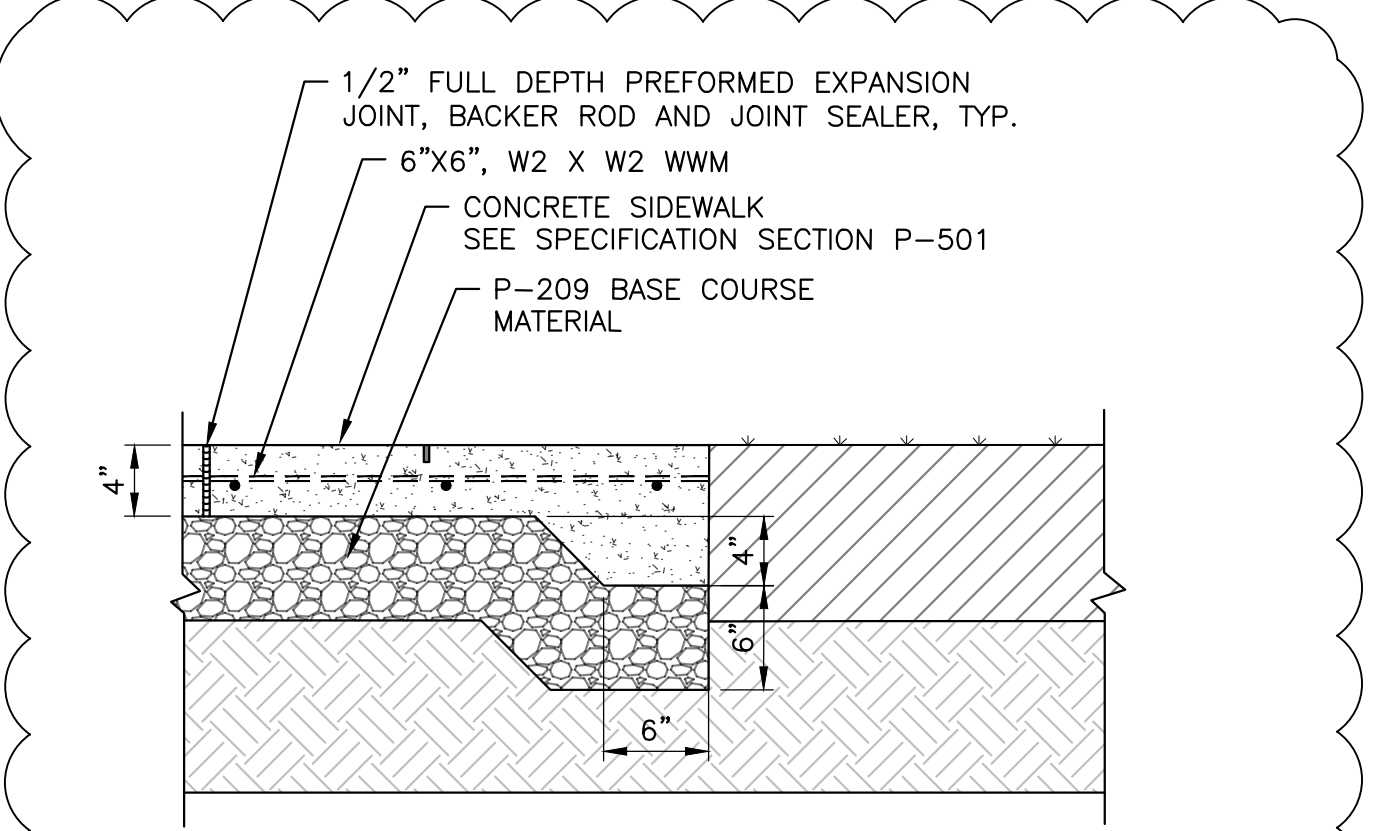
SIDEWALK EXPANSION CONSTRUCTION JOINT
NOT TO SCALE



4' ARCHITECTURAL FENCE DETAIL
NOT TO SCALE

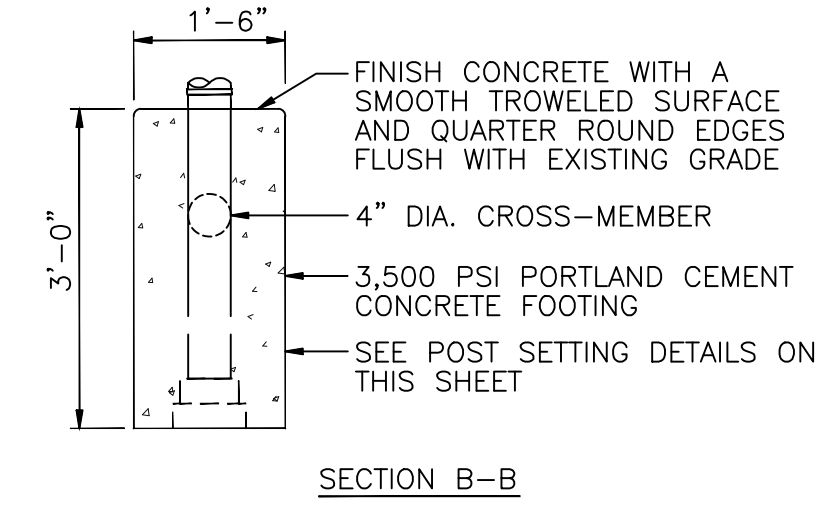
DIMENSIONS					
HEIGHT	A	B	C	D	E
4'-0"	7 5/8"	32 3/4"	7 5/8"	36"	12"

NOTE:
1. FENCE SHALL BE ULTRA FENCING UAF-200 FLAT TOP, INDUSTRIAL, OR APPROVED EQUAL.

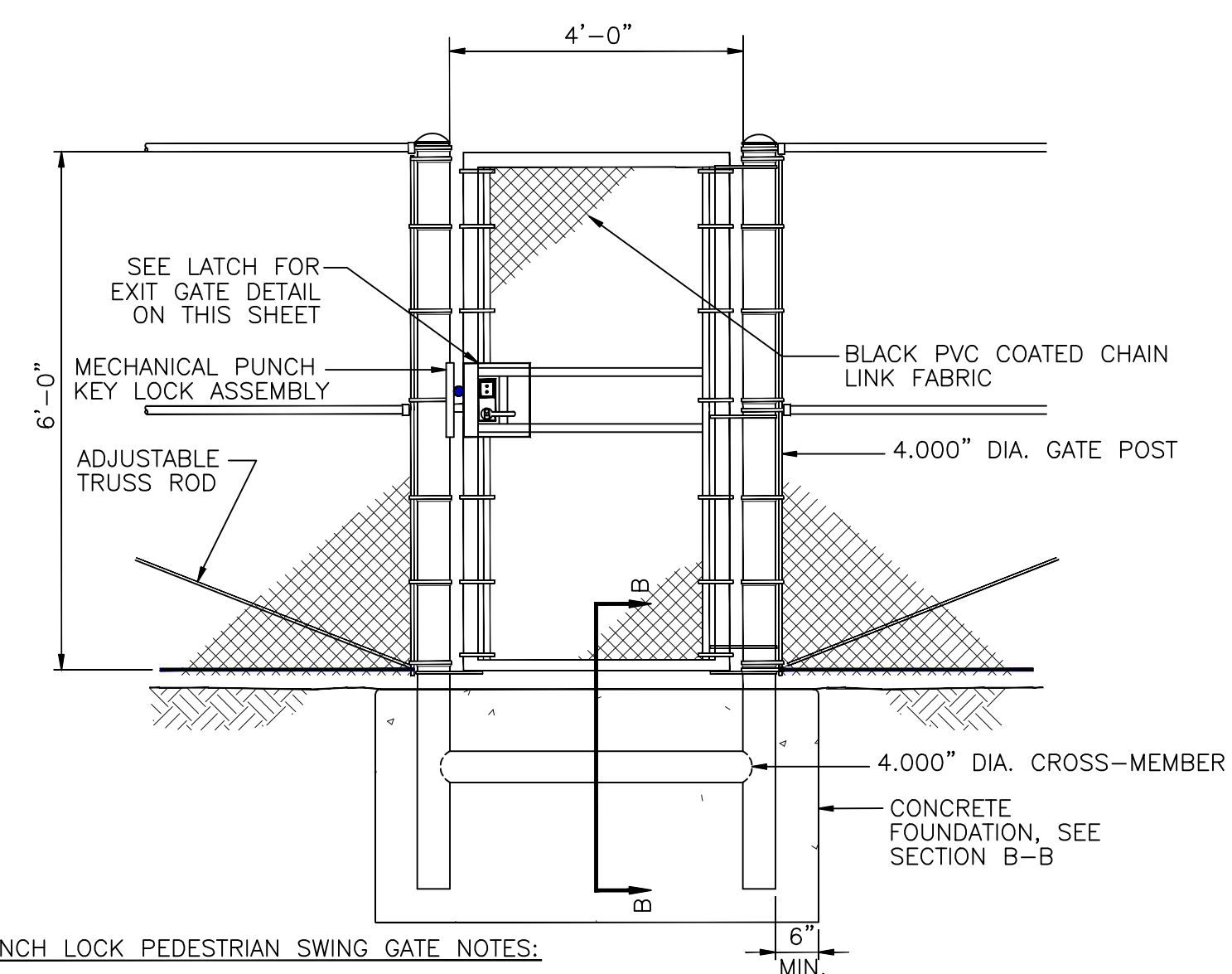


NOTE:
PROVIDE HAND TOoled TRANSVERSE & LONGITUDINAL CONTRACTION JOINTS @ 5'-0" O.C. MAX., 1/2" EXPANSION JOINTS @ 20'-0" O.C. MAX.

CONCRETE SIDEWALK DETAIL
SCALE: NTS

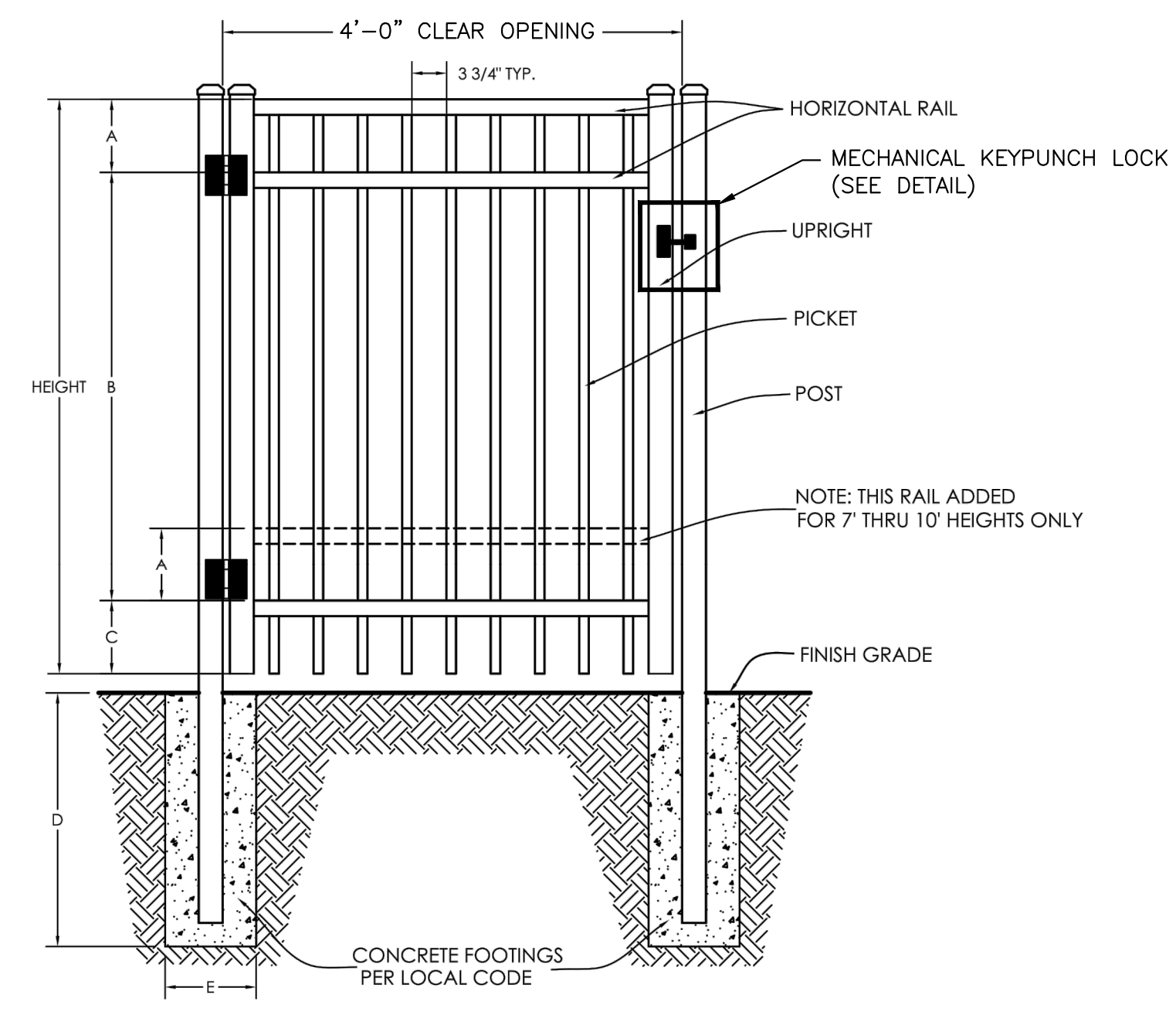


SECTION B-B



MECHANICAL KEYPUNCH LOCK PEDESTRIAN SWING GATE NOTES:
1. GATE FRAME WITH LOCK PLATE, CLOSER, AND ALL OTHER COMPONENTS SHALL BE FABRICATED PRIOR TO HOT DIP GALVANIZING.
2. AUTOMATIC DOOR CLOSER SHALL BE SIZED APPROXIMATELY FOR THE GATE BY THE MANUFACTURER.

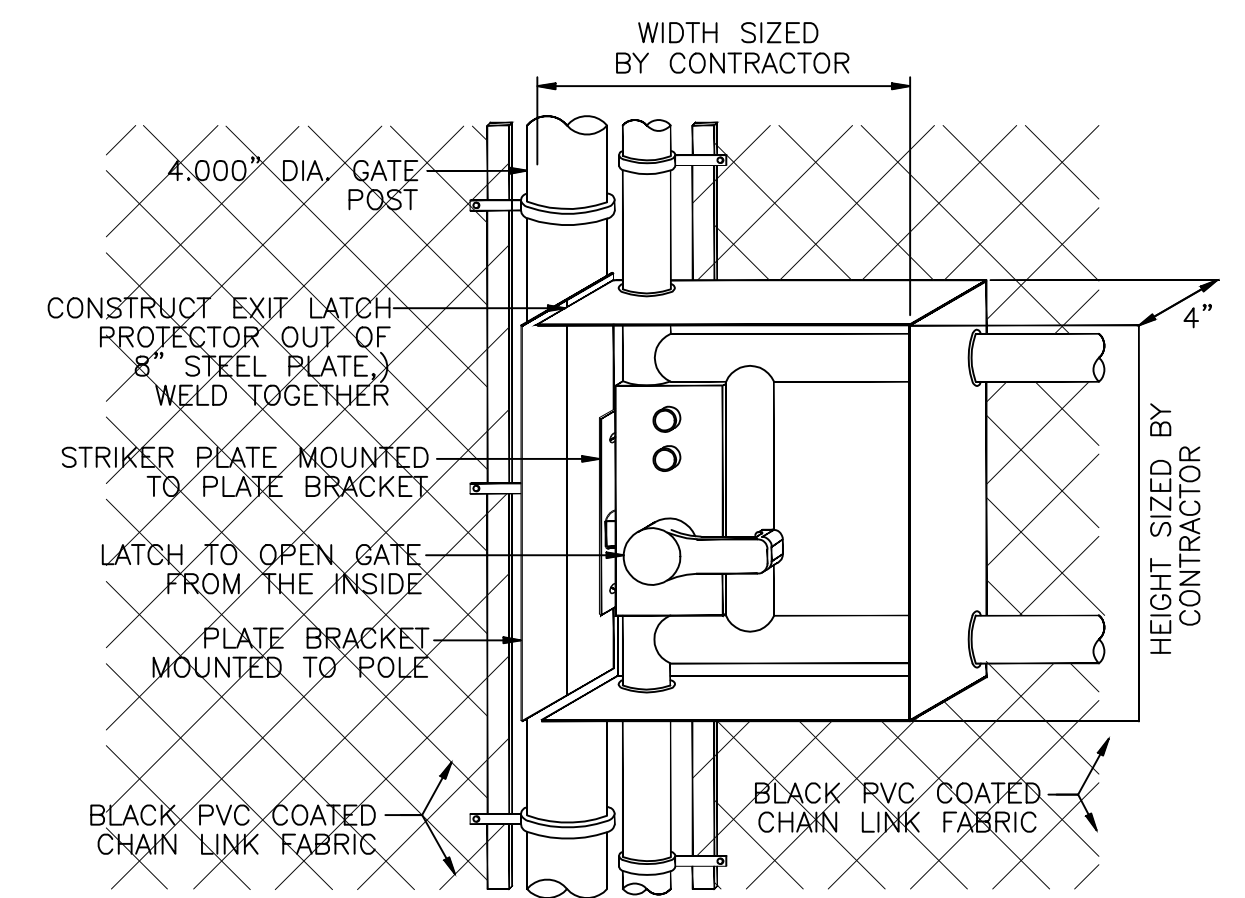
MECHANICAL KEYPUNCH LOCK PEDESTRIAN SWING GATE DETAIL
SCALE: N.T.S.



4' ARCHITECTURAL GATE DETAIL
NOT TO SCALE

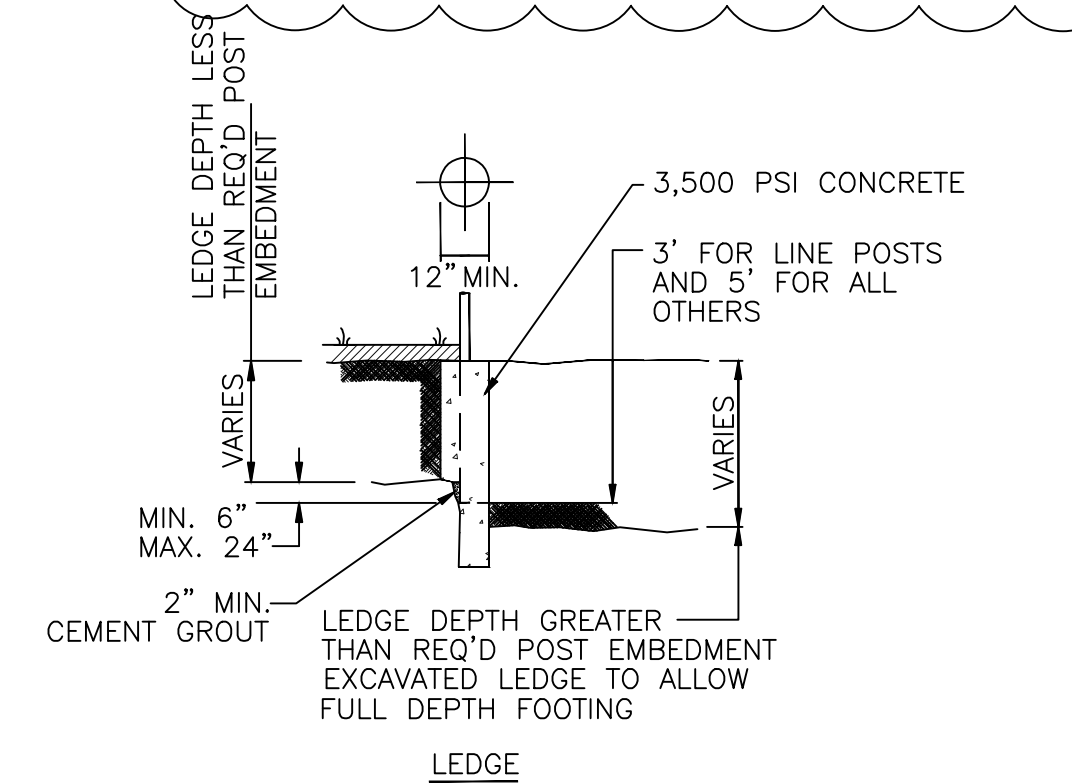
DIMENSIONS					
HEIGHT	A	B	C	D	E
4'-0"	7 5/8"	32 3/4"	7 5/8"	36"	12"

NOTE:
1. GATE SHALL BE ULTRA FENCING UAF-200 FLAT TOP GATE, INDUSTRIAL, OR APPROVED EQUAL.

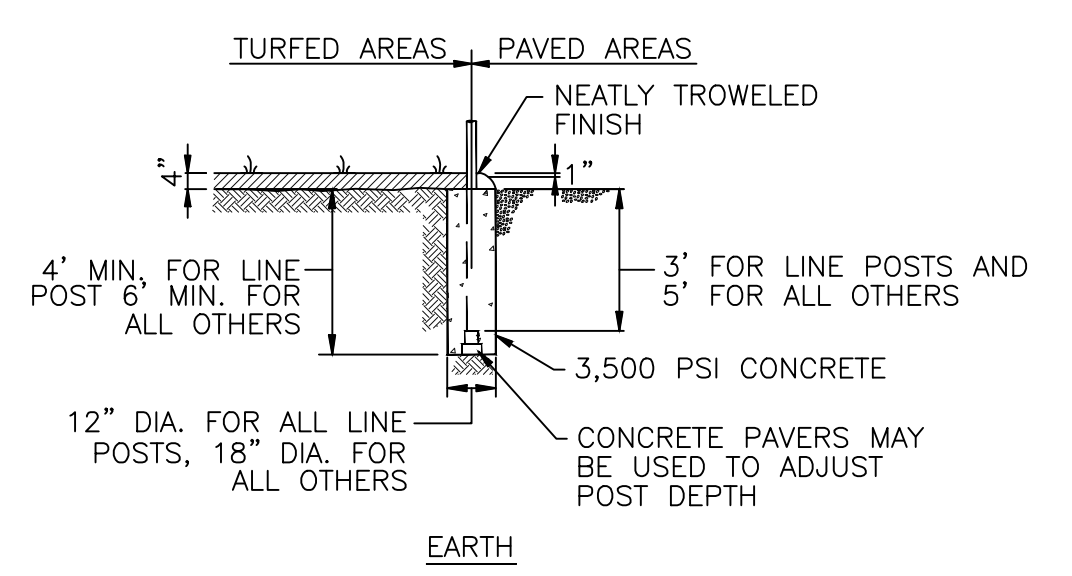


NOTES:
1. ENTIRE GATE WITH EXIT LATCH PROTECTOR SHALL BE FABRICATED PRIOR TO HOT DIP GALVANIZING.
2. THE STRIKER PLATE, MOUNTING PLATE, AND THE WELDED STEEL PLATES SHALL BE FABRICATED STEEL, HOT DIP GALVANIZED, OR AN EQUIVALENT MAY BE ACCEPTABLE WITH APPROVAL OF THE ENGINEER.
3. 8" WIDE AND SHALL BE GROUND SMOOTH TO THE TOUCH) IN ALL LOCATIONS PRIOR TO GALVANIZING.

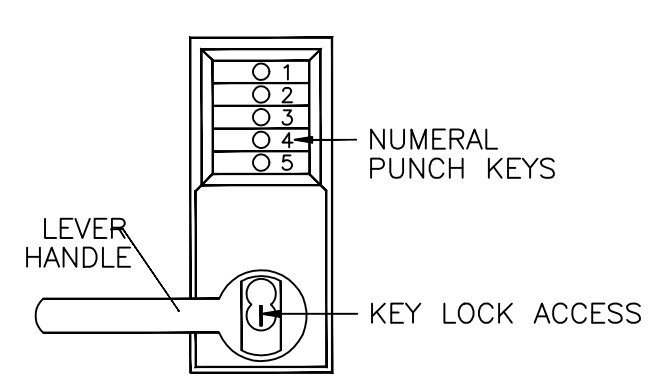
EXIT LATCH PROTECTOR DETAIL
SCALE: N.T.S.



LEDDGE



POST SETTING DETAIL
SCALE: N.T.S.



NOTE:
LOCK ASSEMBLY SHALL BE A KABA ILCO MODEL #L1021 LOCK (OR APPROVED EQUAL) WITH COMBINATION ENTRY, KEY OVERRIDE, AND LOCKOUT PRIVACY CAPABILITIES. MOUNT IN THE GATE FRAME USING A KEEDEX #K-BXSIM WELDABLE MOUNTING BOX (OR APPROVED EQUAL).

MECHANICAL KEYPUNCH LOCK DETAIL
SCALE: N.T.S.